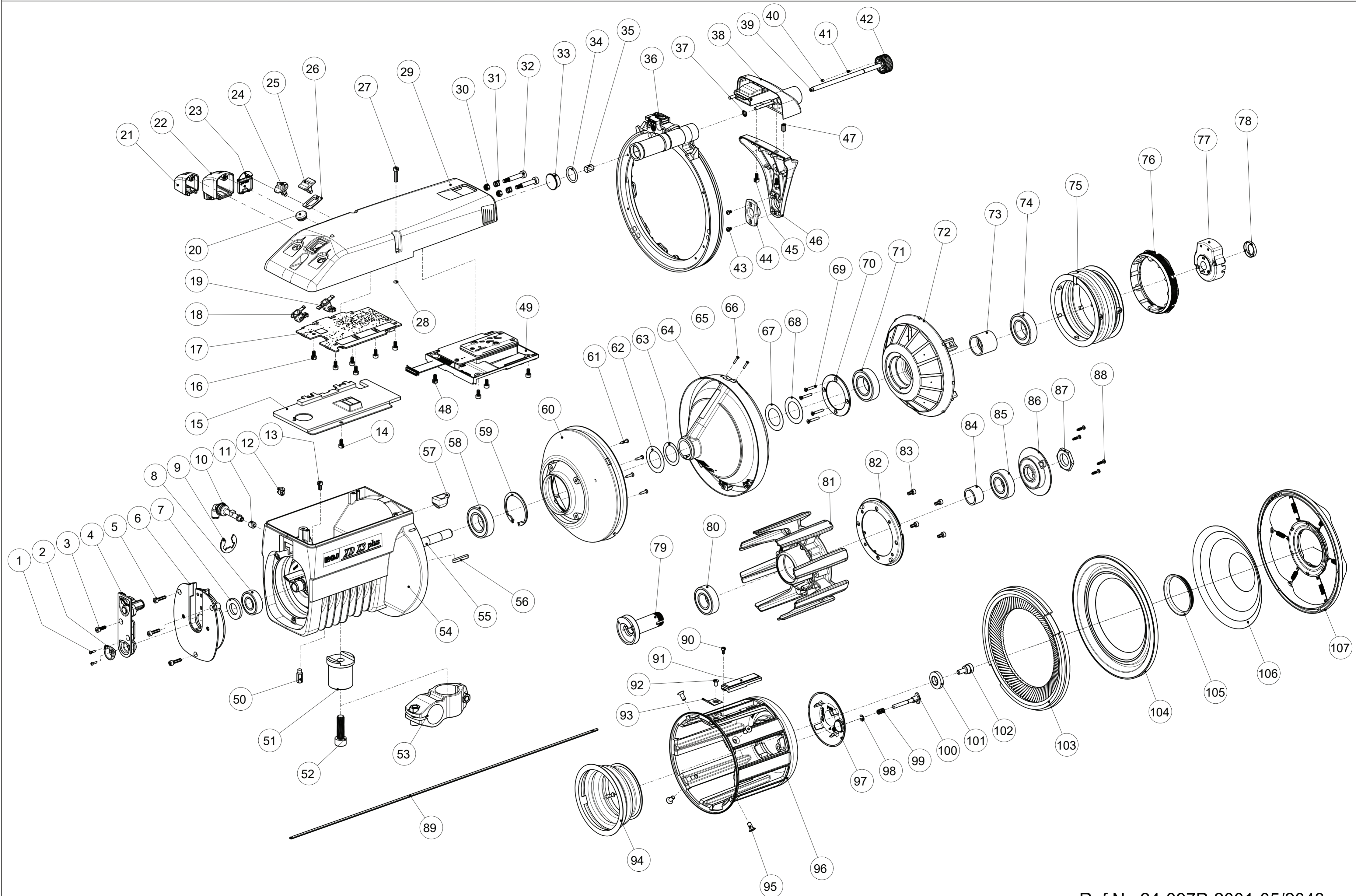






XD X3 Plus - Exploded view





	PAGE 1 (3)	Spare parts list for XD X3 plus 6624.2X.XXI	REF. NO. 24-897P-2001- 05/2043	
---	---------------	--	--------------------------------------	---



POS	PART NO	DESCRIPTION	REMARKS
	ROJ /IRO		
1	900.0588	SCREW	Package of 10 pcs.
2	24.0787.001	EYELET	Package of 10 pcs.
3	900.0218	SCREW	Package of 10 pcs.
4	24.0790.001	VALVE COMPLETE	
5	900.0187	SCREW	Package of 10 pcs.
6	24.0021.001K	MOTOR FLANGE	
7	24.0795	SEAL WASHER. Felt	
8	900.4069	BEARING	Package of 10 pcs.
9	900.9364	CIRCLIP	Package of 10 pcs.
10	24.0138	CONNECTOR COMPL.	
11	24.0173	RUBBER SEAL	
12	24.0371	RUBBER	
13, 14, 16, 45, 48, 83	900.0117	SCREW	Package of 10 pcs.
14, 13, 16, 45, 48, 83	900.0117	SCREW	Package of 10 pcs.
15	24.0809	PROTECTION COVER	
16, 13, 14, 45, 48, 83	900.0117	SCREW	Package of 10 pcs.
17	09E00805R	MOTOR CIRCUIT BOARD	
18	24.0811	KIT - S/Z SWITCH	Including pos. 24
19	24.0721.R	KIT - ON/OFF SWITCH	Including pos. 25, 26
20	900.5531	GROMMET	Package of 10 pcs.
21	24.0653.R	CABLE COVER ACCESSORIES	
22	24.0803.1750	CONNECTION CABLE 1,75 m	
22	24.0803.3000	CONNECTION CABLE 3,00 m	
23	24.0611	CABLE COVER	
24	24.0811	KIT - S/Z SWITCH	Including pos. 18
25	24.0721.R	KIT - ON/OFF SWITCH	Including pos. 19, 26
26	24.0721.R	KIT - ON/OFF SWITCH	Including pos. 19, 25
27	900.0260	SCREW	Package of 10 pcs.
28	900.9355	O-RING	Package of 10 pcs.
29	24.0844.001L	TOP COVER COMPLETE	Incl. pos. 18-21, 23-28, 30, 31, 32
30	900.1016	LOCKING NUT	Package of 10 pcs.
31	24.0862.R	KIT - SHOULDER SCREW & LOCKING NUT	Incl. pos. 30, 32
32	24.0862.R	KIT - SHOULDER SCREW & LOCKING NUT	Incl. pos. 30, 31
33	24.0869	KIT - COVER PISTONG	Incl. pos. 34
34	24.0869	KIT - COVER PISTONG	Incl. pos. 33
35	27.0226	NUT	
36	24.0845.001L	BRUSH HOLDER COMPL.	Incl. pos. 33-35, 37-47
37, 98	900.9058	CIRCLIP	Package of 10 pcs.
38	24.0860.001L.R	KIT - NOSE SUPPORT	Incl. pos. 35, 37, 39-41
39	24.0860.001L.R	KIT - NOSE SUPPORT	Incl. pos. 35, 37, 38, 40, 41
40	900.4002	STEEL BALL	Package of 10 pcs.
41	24.0860.001L.R	KIT - NOSE SUPPORT	Incl. pos. 35, 37, 38, 39, 40
43	900.0603	SCREW	Package of 10 pcs.
44	24.0822.001.R	EYELET Std	Package of 10 pcs.
44	24.0822.002.R	EYELET Polished	Package of 10 pcs.
45, 13, 14, 16, 48, 83	900.0117	SCREW	Package of 10 pcs.
46	24.0859.001L.R	KIT - NOSE WITH CERAMIC. Std	Incl. pos. 43-45, 47
46	24.0859.002L.R	KIT - NOSE WITH CERAMIC. Polished	Incl. pos. 43-45, 47
47	900.0495	SCREW	Package of 10 pcs.
48, 13, 14, 16, 45, 83	900.0117	SCREW	Package of 10 pcs.
49	09E00788	SENSOR	
50	900.0529	SCREW	Package of 10 pcs.

	PAGE 2 (3)	Spare parts list for XD X3 plus 6624.2X.XXI	REF. NO. 24-897P-2001- 05/2043	
---	---------------	--	--------------------------------------	---

POS	PART NO	DESCRIPTION	REMARKS
	ROJ /IRO		
51	24.0858	KIT - FASTENING AND BAR	Incl. pos. 52, 53
52	24.0858	KIT - FASTENING AND BAR	Incl. pos. 51, 53
53	54M00065	CLAMP COMPL.	
54	24.0806.001K	MOTOR COMPLETE. Standard	Incl. pos. 1-13, 50-52, 55-63, 67, 68
54	24.0806.101K	MOTOR COMPLETE. Polished	Incl. pos. 1-13, 50-52, 55-63, 67, 68
55	24.0899.003.01.R	KIT – ROTOR COMPL. Standard	Incl. pos. 7, 8, 56-59, 62, 63, 67, 68
55	24.0899.004.01.R	KIT – ROTOR COMPL. Polished	Incl. pos. 7, 8, 56-59, 62, 63, 67, 68
56	900.9314	KEY	Package of 10 pcs.
57	24.0778.001	EYELET	Package of 10 pcs.
57	24.0778.002	EYELET. Polished	Package of 10 pcs.
58, 71	900.4067	BEARING	Package of 10 pcs.
59	900.9099	CIRCLIP	Package of 10 pcs.
60	24.0025.002	MAGNET RING	
61	900.0478	SCREW	Package of 10 pcs.
62, 68	24.0791	SEAL WASHER. Paper, small	
63	24.0792	SEAL WASHER. Brass	
64	24.0783.101	WINDING DISC COMPL.	Incl. pos. 65, 66
64	24.0783.102	WINDING DISC COMPL. Polished eyelet	Incl. pos. 65, 66
65	24.0896.005	KIT – EYELET.	Incl. pos. 66. Package of 10 set.
65	24.0896.006	KIT – EYELET. Polished	Incl. pos. 66. Package of 10 set.
66	900.0623	SCREW	Package of 10 pcs.
67	24.0794	SEAL WASHER. Plastic film	
68, 62	24.0791	SEAL WASHER. Paper, small	
69	900.0649	SCREW	Package of 10 pcs.
70	24.0857	RING FOR ROTARY LOCKING	
71, 58	900.4067	BEARING	Package of 10 pcs.
72	24.0287.004	MAGNET RING COMPL.	Incl. pos. 69-71, 73-76
73	24.0058	DISTANCE MAGNET RING	
74	900.4065	BEARING	Package of 10 pcs.
75	24.0573.002	BELLOW WITH PLASTIC RING	Incl. pos. 76, 88
76	24.0573.002	BELLOW WITH PLASTIC RING	Incl. pos. 75, 88
77	24.0725	KIT - COUNTER WEIGHT	Incl. pos. 78
78	24.0725	KIT - COUNTER WEIGHT	Incl. pos. 77
79	24.0724.002	INCLINED HUB WITH S/Z RING AND NUT STD- separation	Incl. pos. 86, 87
79	24.0724.003	INCLINED HUB WITH S/Z RING AND NUT, XL-separation	Incl. pos. 86, 87
79	24.0724.004	INCLINED HUB WITH S/Z RING AND NUT, XS-separation	Incl. pos. 86, 87
80, 85	900.4068	BEARING	Package of 10 pcs.
81	24.0141	TUMBLING CYLINDER COMPL., Chrome	Incl. pos. 80, 82-85
81	24.0141.001	TUMBLING CYLINDER COMPL., Plasma	Incl. pos. 80, 82-85
81	24.0141.002	TUMBLING CYLINDER COMPL. One way bearing	Incl. pos. 80, 82-85
81	24.0141.003	TUMBLING CYLINDER COMPL. One way bearing, plasma coated	Incl. pos. 80, 82-85
81	24.0141.004	TUMBLING CYLINDER COMPL. XL-sep	Incl. pos. 80, 82-85
81	24.0141.005	TUMBLING CYLINDER COMPL. XL-sep, plasma coated	Incl. pos. 80, 82-85
81	24.0141.006	TUMBLING CYLINDER COMPL. XL-sep., one way bearing	Incl. pos. 80, 82-85
81	24.0141.007	TUMBLING CYLINDER COMPL. XL-sep., one way bearing, plasma coated	Incl. pos. 80, 82-85
81	24.0141.008	TUMBLING CYLINDER COMPL. XL-sep., sand blasted	Incl. pos. 80, 82-85
82	24.0680	FRONT BELLOWS HOLDER	Incl. pos. 80, 82-85
83, 13, 14, 16, 45, 48	900.0117	SCREW	Package of 10 pcs.
84	24.0059	SPACER	

	PAGE 3 (3)	Spare parts list for XD X3 plus 6624.2X.XXI	REF. NO. 24-897P-2001- 05/2043	
---	---------------	--	--------------------------------------	---

POS	PART NO	DESCRIPTION	REMARKS
	ROJ /IRO		
85, 80	900.4068	BEARING	Package of 10 pcs.
86	24.0724.002	INCLINED HUB WITH S/Z RING AND NUT STD- separation	Incl. pos. 79, 87
86	24.0724.003	INCLINED HUB WITH S/Z RING AND NUT, XL-separation	Incl. pos. 79, 87
86	24.0724.004	INCLINED HUB WITH S/Z RING AND NUT, XS-separation	Incl. pos. 79, 87
87	24.0724.002	INCLINED HUB WITH S/Z RING AND NUT STD- separation	Incl. pos. 79, 86
87	24.0724.003	INCLINED HUB WITH S/Z RING AND NUT, XL-separation	Incl. pos. 79, 86
87	24.0724.004	INCLINED HUB WITH S/Z RING AND NUT, XS-separation	Incl. pos. 79, 86
88	900.0303	SCREW	Package of 10 pcs.
89	24.0174	THREADING NEEDLE	
90	900.0426	SCREW	Package of 10 pcs.
91	24.0422.002	REFLECTOR	
92	900.0327.001	SCREW	Package of 10 pcs.
93	24.0244	YARN BREAK MIRROR	
94	24.0242	BELLOWS	
95	900.0120	SCREW	Package of 10 pcs.
96	24.0237	SPOOL BODY Chromed	
96	24.0320	SPOOL BODY Plasma	
96	24.0237.001	SPOOL BODY Extra polished	
96	24.0237.002	SPOOL BODY Ribbed front	
96	24.0237.008	SPOOL BODY Relaxing ramp + concave	
96	24.0320.001	SPOOL BODY Plasma coated + XL-separation	
96	24.0320.002	SPOOL BODY Plasma coated + XL-separation + relaxing ramps	
96	24.0438.005	SPOOL BODY Relaxing ramps + ribbed front	
96	24.0438.006	SPOOL BODY XL-separation	
96	24.0438.010	SPOOL BODY Relaxing ramps + ribbed front + concave + blasting	
97	27.0160	COVER	
98, 37	900.9058	LOCKING WASHER	Package of 10 pcs.
99	24.0723	KIT - S/Z BUTTON	Incl. pos. 98, 100
100	24.0723	KIT - S/Z BUTTON	Incl. pos. 98, 99
101	24.0722.R	WASHER PACKAGE AND SCREW	Incl. pos. 102
102	24.0722.R	WASHER PACKAGE AND SCREW	Incl. pos. 101
103	24.0261.001	BRUSH SOFT. Natural, z-rotation	
103	24.0261.201	BRUSH SOFT. Natural, straight	
103	54T00774	BRUSH MEDIUM. Natural, z-rotation	
103	54T00775	BRUSH MEDIUM. Natural, s-rotation	
103	54T00773	BRUSH MEDIUM. Natural, straight	
103	24.0261.004	BRUSH MEDIUM. Synthetic, z-rotation	
103	24.0261.104	BRUSH MEDIUM. Synthetic, s-rotation	
103	24.0261.204	BRUSH MEDIUM. Synthetic, straight	
103	24.0261.005	BRUSH STIFF. Synthetic, z-rotation	
103	24.0261.105	BRUSH STIFF. Synthetic, s-rotation	
103	24.0261.205	BRUSH STIFF. Synthetic, straight	
103	54T00783	BRUSH X-STIFF. Synthetic, z-rotation	
103	54T00784	BRUSH X-STIFF. Synthetic, s-rotation	
103	54T00782	BRUSH X-STIFF. Synthetic, straight	
103	24.0261.007	BRUSH STIFF. Synthetic, z-rotation	
103	24.0261.107	BRUSH STIFF. Synthetic, s-rotation	
103	24.0261.207	BRUSH STIFF. Synthetic, straight	
103	54T00830	BRUSH	

	PAGE 4 (3)	Spare parts list for XD X3 plus 6624.2X.XXI	REF. NO. 24-897P-2001- 05/2043	

POS	PART NO	DESCRIPTION	REMARKS
	ROJ /IRO		
104	24.0252.001	E-FLEX SOFT	
104	24.0252.102	E-FLEX MEDIUM	
104	24.0281.003	E-FLEX STIFF	
104	24.0281.103	E-FLEX EXTRA STIFF	
104	54F00164	FLEX BRAKE	
105 + 106 + 107	24.0699.101	S-FLEX SOFT	
105 + 106 + 107	24.0699.002	S-FLEX STANDARD	
105 + 106 + 107	24.0699.003	S-FLEX STIFF	
105	28E01049	LOCKING RING	
106	43E00088	CONE SOFT	
106	24.0727.001	CONE STANDARD	
106	24.0727.002	CONE STIFF	
107	24.0786.101	S-FLEX BRACKET SOFT	
107	24.0786.002	S-FLEX BRACKET STANDARD	
107	24.0786.003	S-FLEX BRACKET STIFF	