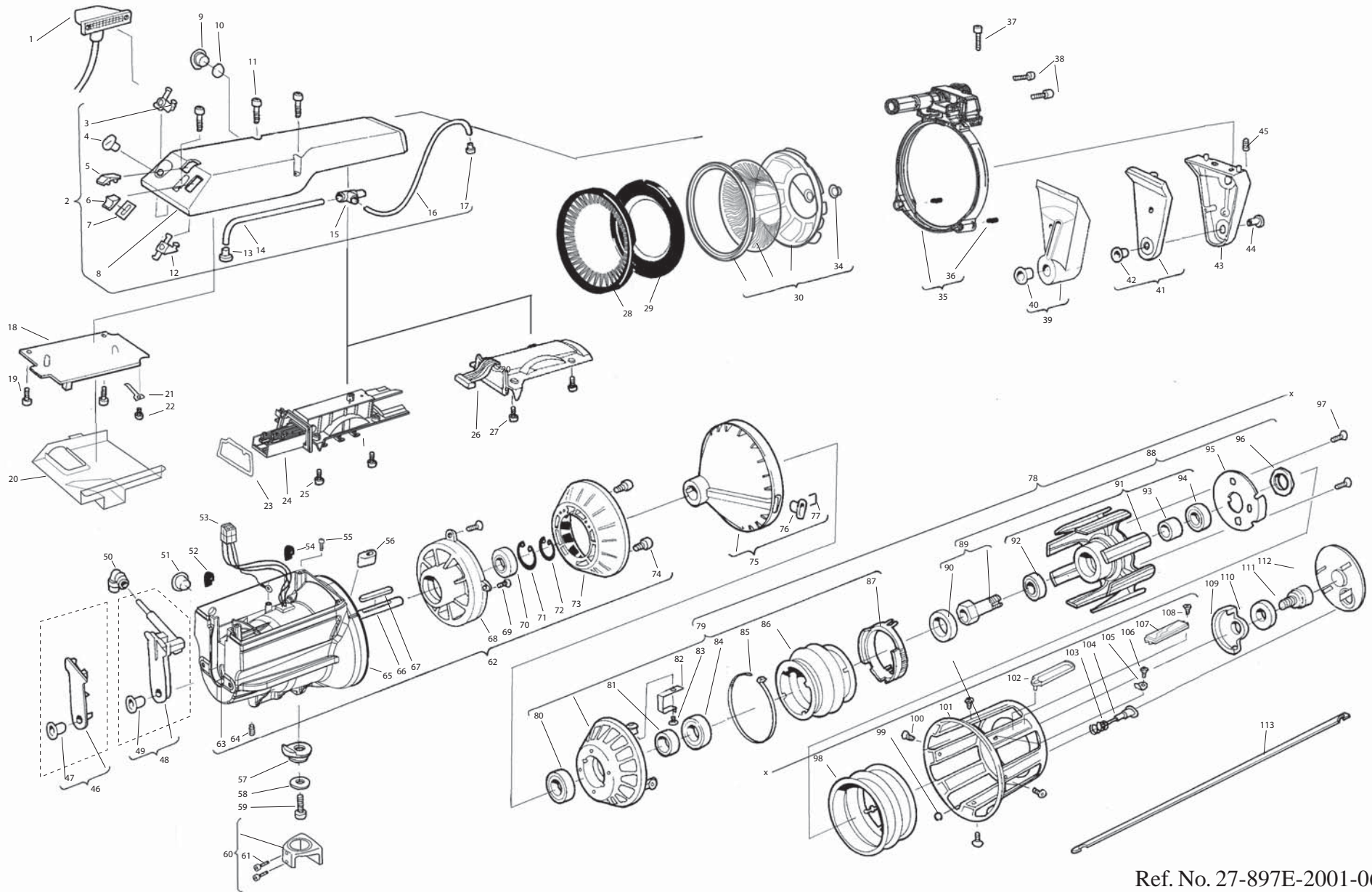




# Luna X2 - Exploded view



Ref. No. 27-897E-2001-06/2433

	PAGE 1 (4)	Spare parts list for Luna X2 5027-.20/21/22/23/24-.XXC. Luna X2 5127-.20/21/22/23/24-.XXC.	REF. NO. 27-897E- 2001-06/2433	
		Spare parts list for Luna X2 5027-.20/21/22/23/24-.XXD. Luna X2 5127-.20/21/22/23/24-.XXD.		

Parts specific only to certain models are identified with □ in the centre column.

Luna X2 Optical sensor = O.



Luna X2 Mechanical sensor = M.

Unmarked positions are common to all feeder models.

Luna X2 Rev C to series number 06131532

Luna X2 Rev D from series number 06104373

POS	PART NO	DESCRIPTION	Luna X2 Rev C		Luna X2 Rev D		REMARKS
			O	M	O	M	
1	27.0923.1200	CABLE 1,20m					
1	27.0923.1750	CABLE 1,75m					
2	27.0716.012L	TOP COVER assy.		□		□	Manual and half-threading
2	27.0716.011L	TOP COVER assy.		□		□	Full-threading
2	27.0716.002L	TOP COVER assy.	□		□		Manual and half-threading
2	27.0716.001L	TOP COVER assy.	□		□		Full-threading
3	27.0332	MAGNET HOLDER		□		□	
4	27.0509	SWITCH, max speed		□		□	
5	27.0143	INDICATOR COVER					
6	24.0047	SWITCH, on/off					
7	24.0048	FRAME					
8	27.0150.120L	TOP COVER	□		□		
8	27.0150.130L	TOP COVER		□		□	
9	27.0724.001	SWITCH, S/Z compl.					
9	900.5531	PLUG					
10	900.9104	O-RING					
11	900.0302	SCREW					
12	27.0331	MAGNET HOLDER, on/off					
13	27.0026	CONNECTOR					Half and full-threading
14	27.0141	HOSE					Half and full-threading
15	27.0142	CONNECTOR					
16	25.0307.004	HOSE					Full-threading
17	27.0222	CONNECTOR					Full-threading
18	27.9144.NNNN*	CIRCUIT BOARD compl.		□		□	*Loom model must be specified (Manufacture and type)
18	27.9145.NNNN*	CIRCUIT BOARD compl.	□		□		*Loom model must be specified (Manufacture and type)
19	900.0426	SCREW					
20	27.0677	PROTECTION COVER					
21	27.0674	SPRING PLATE					
22	900.0426	SCREW					
23	27.0190	SEAL					
24	27.0672.102	SENSOR compl.		□			Plasma coated version=27.0672.112
24	27.0672.202	SENSOR compl.				□	Plasma coated version=27.0672.212
25	900.0117	SCREW	□		□		
26	52Z00284R	SENSOR COMPL.	□				
26	52Z00284R	SENSOR COMPL.			□		
27	900.0117	SCREW		□		□	
28	27.0492.005	BRUSH SOFT, natural, straight.					
28	27.0492.105	BRUSH SOFT, natural, z-rotation.					
28	27.0492.205	BRUSH SOFT, natural, s-rotation.					
28	27.0492.002	BRUSH MEDIUM, natural, straight.					
28	27.0492.102	BRUSH MEDIUM, natural, z-rotation.					
28	27.0492.202	BRUSH MEDIUM, natural, s-rotation.					
28	27.0492.006	BRUSH MEDIUM, synthetic, straight.					
28	27.0492.106	BRUSH MEDIUM, synthetic, z-rotation.					
28	27.0492.004	BRUSH STIFF, synthetic, straight.					
28	27.0492.104	BRUSH STIFF, synthetic, z-rotation.					
29	27.0524.001	E-FLEX 30° SOFT					Black colour (Strip only = 27.0438.001)
29	27.0573.102	E-FLEX 30° MEDIUM					Blue colour (Strip only = 27.0438.002)
29	27.0585.002	E-FLEX 30° STIFF					Red colour (Strip only = 27.0438.002)
29	27.0585.103	E-FLEX 30° EXTRA STIFF					Grey colour (Strip only = 27.0438.004)
29	27.0734.002	E-FLEX 42° STIFF					Red colour (Strip only = 27.0541.002)
30	54T00730	LAMELLA BRAKE, soft Z-rotation, Compl.					

	PAGE 2 (4)	Spare parts list for Luna X2 5027-.20/21/22/23/24-.XXC. Luna X2 5127-.20/21/22/23/24-.XXC.	REF. NO. 27-897E- 2001-06/2433	
		Spare parts list for Luna X2 5027-.20/21/22/23/24-.XXD. Luna X2 5127-.20/21/22/23/24-.XXD.		

Parts specific only to certain models are identified with □ in the centre column.

Luna X2 Optical sensor = O.

Luna X2 Mechanical sensor = M.

Unmarked positions are common to all feeder models.

Luna X2 Rev C to series number 06131532

Luna X2 Rev D from series number 06104373

POS	PART NO	DESCRIPTION	Luna X2 Rev C		Luna X2 Rev D		REMARKS
			O	M	O	M	
30	54T00731	LAMELLA BRAKE, medium Z-rotation, Compl.					
30	54T00732	LAMELLA BRAKE, stiff Z-rotation, Compl.					
34	27.0479.001	EYELET					
35	27.0491.001L	CYLINDER compl.					Manual and half-threading
35	27.0491.000L	CYLINDER compl.					Full-threading
36	27.0490	LOCATING DOGS					
37	900.0447	SCREW					
38	900.0496	SCREW					
39	27.0597.001	NOSE EXTENDER 30° compl.					Extra polished version = 27.0597.002
40	900.6163.001	EYELET					Extra polished version = 900.6163.003
41	27.0465.001	NOSE EXTENDER 42° compl.					Extra polished version = 27.0465.002
42	900.6163.001	EYELET					Extra polished version = 900.6163.003
43	27.0144.100L	Nose Compl.30° included Pos. 39,44,45					Extra polished version = 27.0144.101L
43	27.0144.000L	NOSE Compl. 42° included Pos. 41,44,45					Extra polished version = 27.0144.001L
44	900.6163.001	EYELET					Extra polished version = 900.6163.003
45	900.0495	SCREW					
46	27.0547.001	COVER compl.					Manual threading (Extra polished version = 27.0547.002)
47	900.6101	EYELET					Extra polished version = 900.6101.001
48	27.0170.001	VALVE compl.					Full-threading (Extra polished version = 27.0170.101)
48	27.0170.002	VALVE compl.					Half-threading (Extra polished version = 27.0170.102)
49	900.6101	EYELET					Extra polished version = 900.6101.001
50	900.9296	CONNECTOR					
51	27-0903	PLUG					
52	27.0739	SEALING					
53	27.0644	STATOR	□	□			
53	27.0768.004	STATOR			□	□	
54	27.0739	SEALING					
55	900.0117	SCREW					
56	900.6160	EYELET					
57	27.0215	WASHER					
58	900.2008	WASHER					
59	900.0497	SCREW					
60	24.0462	MOUNT assy.					
61	900.0035	SCREW					
62	27.0712.000K	MOTOR compl.	N/A	N/A			Obsolet part
62	27.0781.000K	MOTOR compl.			□	□	
63	900.4061	BEARING					
64	900.0529	SCREW					
65	27.0713.000K	MOTOR WITH STATOR	N/A	N/A			Obsolet part
65	27.0780.000K	MOTOR WITH STATOR			□	□	
66	27.0689	ROTOR compl.	□	□			
66	27.0779	ROTOR compl.			□	□	
67	900.9314	KEY					
68	28.0009	MOTOR FLANGE					
69	900.0075	SCREW					
70	900.4064	BEARING					
71	900.9014	CIRCLIP					
72	900.9017	CIRCLIP					

